

Water refill and drinking fountain setup instructions

Please read this before setup

- Do not set the units up near live exposed electrical connections or wiring.
- Do not set up in high wind areas.
- If the hoses pass over traffic areas use approved hose trip covers. (see point 9 over the page)

What is included in the bag



1. Carry Bag
2. Water unit
3. Water hose
4. Drain hose
5. Drain joiner hose
6. Water joiner hose
7. Tap adapter
8. Base plate
9. Hazard floor covers x 3

Taste and Flushing



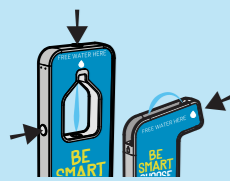
Hose length

Set the unit up as close to the tap as possible. Keep the length of the blue water supply hose (running from the tap to the portable unit) as short as possible. This will help stop the water from heating up in the hose.



Hot days

Try to cover, insulate or reduce exposure of direct sunlight or hot ground (eg. concrete) to the blue water supply hose. Try not to get hose too hot where possible as this will affect the taste of the water.



Event flushing

If water stations are sitting unused for extended periods of time or on hot days, remember to flush water through the system to refresh the water in the hoses and internal plumbing. This will help keep the water cooler and fresher.

Cleaning and maintenance

It is very important to keep the units in the best possible condition. Keep the units clean and stored in a dry cool place when not in use.

Before use

Check all hoses, connections and nozzles for dirt, grime, mold or other contaminants. Contact Westernport Water if components do not look clean and sterile.

After use

Drain all water from the base unit and hoses. Wipe down all surfaces and check for damage.

Setting up a single unit

1

- Check tap for pressure and clean water.
- Run tap for 30 seconds.

2

Connect the tap adapter and drinking hose.

3

- Choose suitable, flat location and position the base, preferably no more than a couple of metres from tap.
- Lower the unit in to the base so it clips in place.

4

Flushing
Flush all the hoses with clean water prior to connecting to the unit. As a guide 30 seconds per 10m hose. If the hoses appear dirty do not use and contact Westernport Water.

5

Fill the base with water for more stability, ensuring the plug is secured firmly.

6

Connecting the hoses

- Connect the water hose and the drain hose to either side of the unit.
- Turn on the tap.

7

Cleaning

- Press all the buttons to flush out any air bubbles and old water in the lines/hoses.
- Run all the taps for 30 seconds.
- Check for leaks. If a leak is found turn off the water and check connections.

Note:

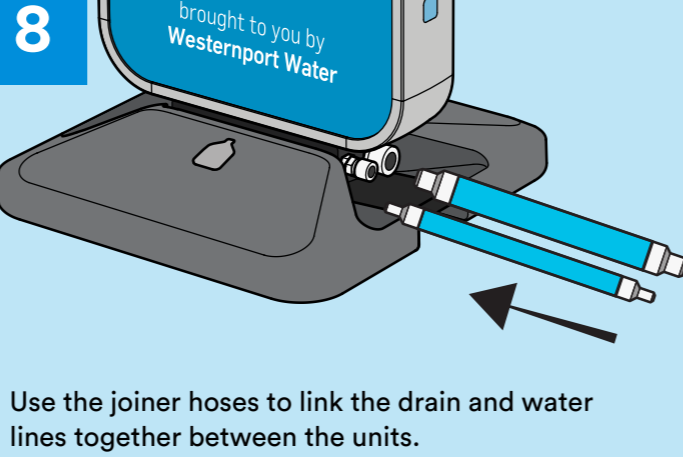
- The unit has to have a drain hose connected to drain.
- Drain water to grassy area or under trees/bushes if possible so you don't create a slip hazard.

Setting up multiple units

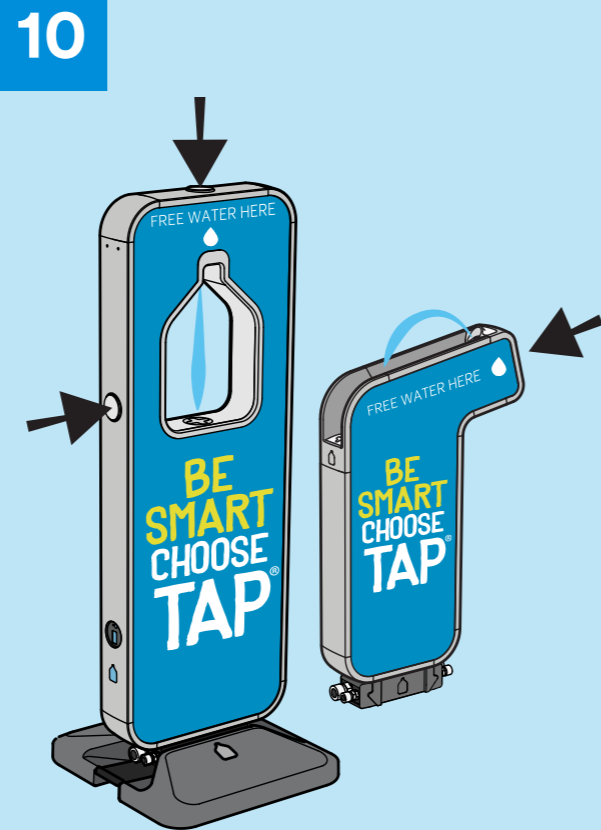
7 Follow steps 1-4.

9 **Connecting the hoses**

- Connect the water hose from the tap to the first or last unit.
- Connect the drain hose to the first or last unit.
- **Turn on the tap.**

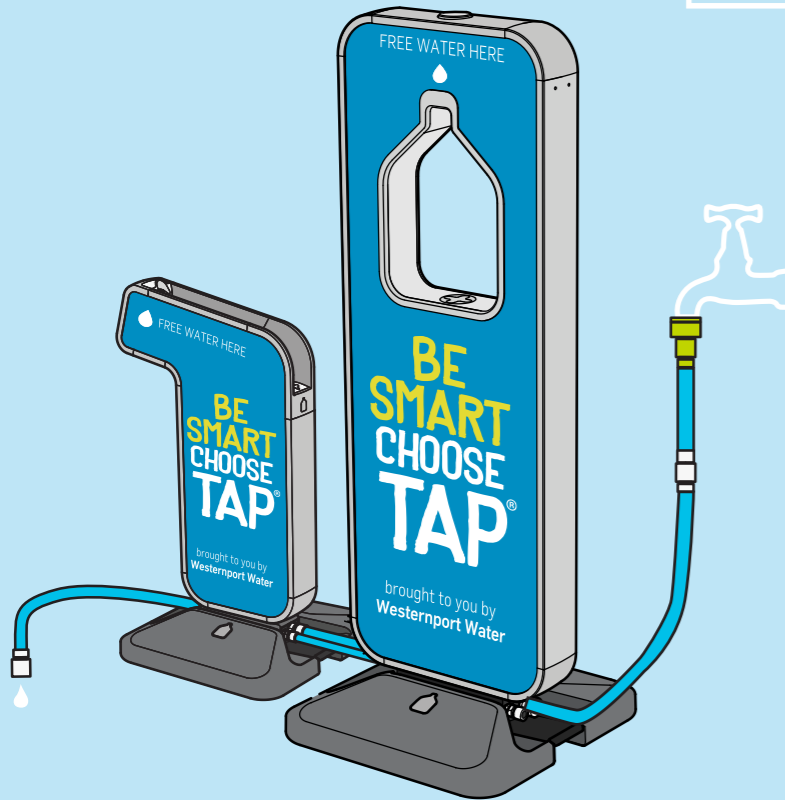


Use the joiner hoses to link the drain and water lines together between the units.



Cleaning

- Press all the buttons to flush out any air bubbles and old water in the lines.
- Run all the taps for 30 seconds.
- **Check for leaks.** If a leak is found turn off the water and check connections.



Note: The unit has to have a drain hose connected to drain.

Pack down and clean up of units

