

Annual water outlook 2018

The Annual Water Outlook provides Westernport Water's water availability from 1 December 2018 to 30 November 2019. The outlook for the upcoming year shows that water supplies will be sufficient to meet supply and demand requirements to the end of the period, with no need to change restriction levels from Permanent Water Saving Rules. Westernport Water will closely monitor stream flows and rainfall during the forecasted period and respond accordingly.

Water supply sources include Tennent Creek, the Bass River, groundwater bores in the Corinella groundwater management area, and the Melbourne pool, which includes desalinated water.

At a glance

- Water supplies will meet demand to 30 Nov 2019, under normal or dry scenarios
- Nov-Jan are likely to be warmer than average
- Forecast drier than average for eastern Australia for Nov-Jan.

Our customers



- 20,150 customers
- 50% of customers are non-permanent residents.

Water use 2017-18



- Total water consumption 2,002 ML
- 62% residential use
- 33% non residential
- 5% leakage.

Water resource position

- Candowie Reservoir 69% full 30 November 2018



Recycled water



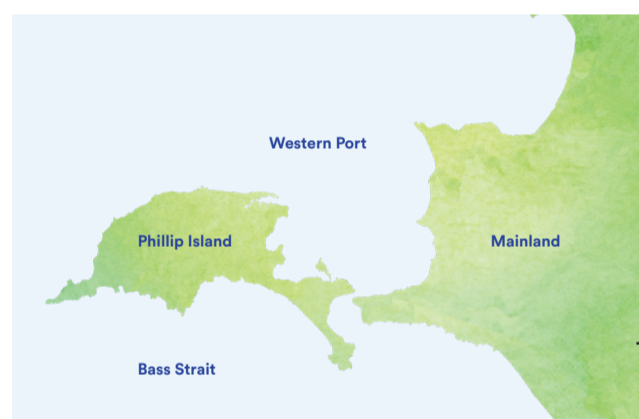
- 4% residential use
- 23% non residential
- 73% applied to Westernport Water land

On average 328.8 ML of recycled water is produced and used by Westernport Water and the community. Which equates to 21% of wastewater recycled.

Our service area



- Grantville/Pioneer Bay
- Corinella/Coronet Bay
- Dalyston/Archies Creek
- Kilcunda
- Phillip Island
- San Remo



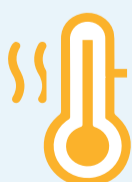
Climate Outlook



Of note

- 880mm rainfall recorded in the Candowie Catchment during 2017-18
- The Bureau of Meteorology advises the November to January rainfall outlook, issued 25 October 2018, shows drier than average conditions and reduced rainfall

Daytime and overnight temperatures for November to January are likely to be warmer than average for most of the country, with chances of a warmer three months greater than 80% over most of mainland.



Warmer



Dryer

Water storage forecast



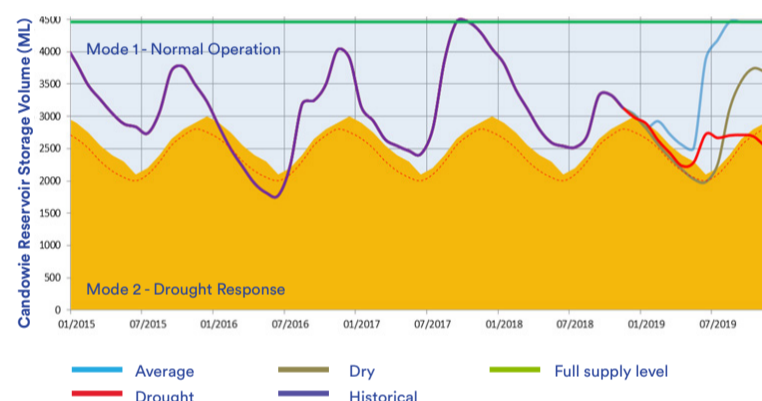
Tennent Creek Scenarios

Average - 50th percentile Tennent Ck annual inflow

Dry - 5th percentile Tennent Ck annual inflow

Drought - minimum Tennent Ck annual inflow

**Average annual demand for all scenarios



Urban water strategy actions

- Ongoing monitoring and assessment of system operating rules
- Actively pursue water conservation measures, including leakage detection, education and community awareness, as well as implementing water efficiency programs
- Continue to seek new customers for its Class A recycled water supply, relieving pressure on the potable supply and reducing ocean outfall discharge
- Continue to monitor and review supply and demand forecasts in line with our Drought Preparedness Plan
- Monitoring of weekly storage levels, daily demand, Melbourne supply system and Bass River supply to ensure maximum levels are contained in Candowie Reservoir.

NEED MORE INFORMATION

For a full copy of Westernport Water's Annual Water Outlook visit the website.



WESTERNPORT
WATER™



1300 720 711

westernportwater.com.au